

CNC

# 1000 Series Waterjet

Reliable turnkey solutions for water only, waterjet applications requiring value, performance, and versatility.



**MULTICAM**  
Complete CNC Solutions

# Entry Level Price...

# ...Cutting Edge Performance!

## 1000 SERIES WATERJET

The industry challenge was to build a rigid, reliable CNC machine platform with excellent water only cutting performance at an entry-level price. With over 25 years of industry-leading design experience, MultiCam is able to offer a price and performance breakthrough with the 1000 Series Waterjet.

The MultiCam 1000 Series Waterjet is the perfect solution for many manufacturing applications that require fast and precise water-only cutting on materials such as foam, carpet, filter media, cardboard, and more. Capable of multi-head cutting as well, the MultiCam 1000 Series provides value, productivity, and performance.

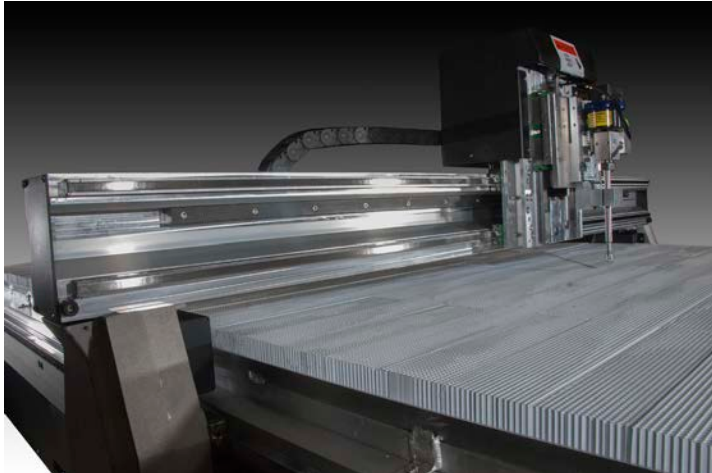


## FEATURES & SPECIFICATION GUIDE

### PERFORMANCE / EASE OF USE / PRODUCTIVITY

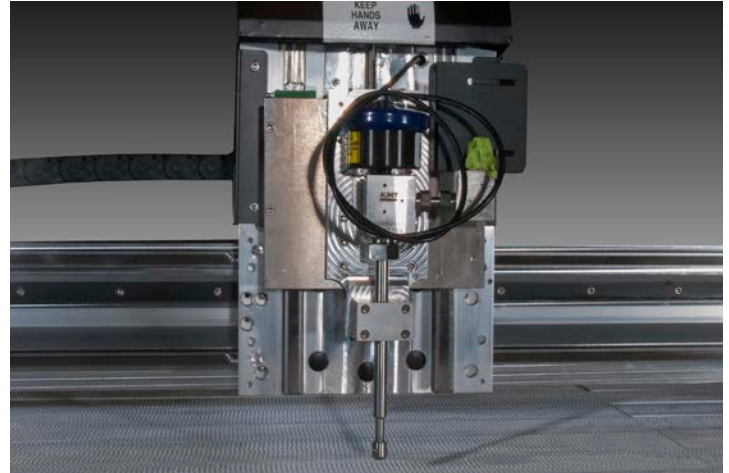
# FEATURES

Innovative design and versatile features provide a robust and valuable platform for your applications.



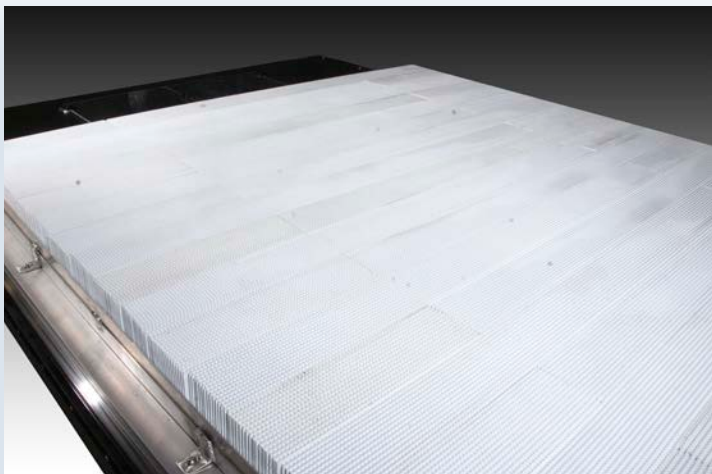
## Gantry **Rigid & Precise**

Engineered from aircraft quality aluminum extrusion, the gantry tube provides maximum stiffness and rigidity. References for the precision linear bearings are extruded in the design and have excellent parallelism.



## Nozzle **Engineered for Performance**

KMT Waterjet heads provide the most advanced alignment technology for precise cutting on a vast amount of materials with minimal kerf while holding tolerances up to  $\pm .003"$  or  $.076\text{mm}$ .



## Working Surface **Versatile, Effective, & Multi-functional**

Working surfaces can be easily transformed from grating to bricks depending on your application.

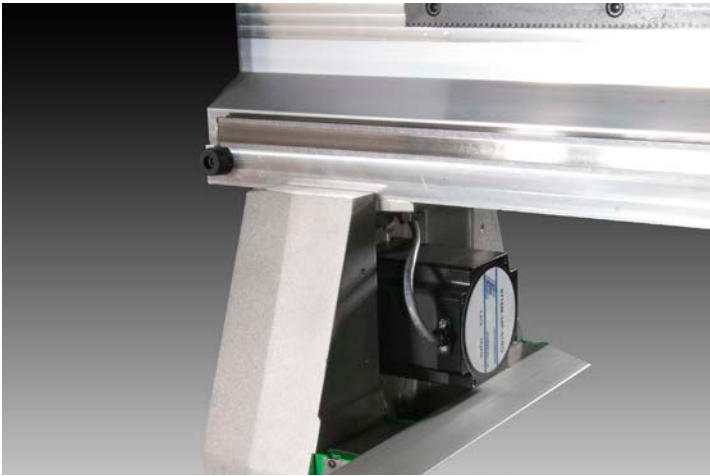


## Clamps **Solid, Heavy-Duty Construction**

Convenient clamping mechanisms keep the cut surface flat and secure, while achieving the highest possible usage.

# FEATURES

The 1000 series design and software controls provide a robust and easy to use system for maximum productivity.



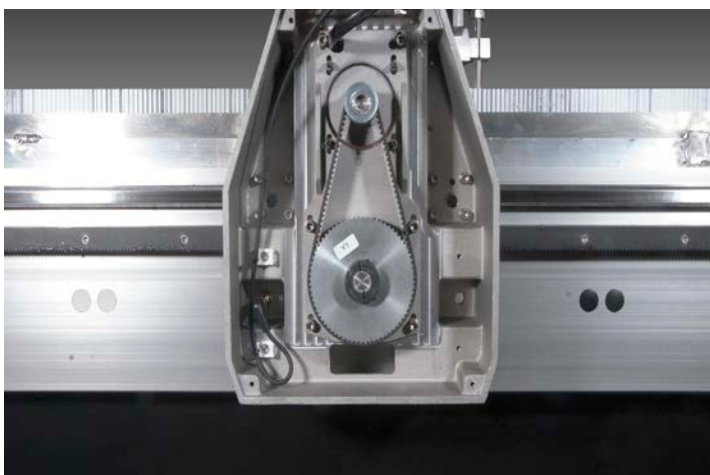
## Drive Motor System **Smooth & Accurate**

The 1000 Series Waterjet features 2-phase digital brushless, synchronous electric motors which have undergone extensive testing and are optimized to run efficiently and smooth.



## EZ Control **Easy-To-Use**

MultiCam's EZ Control is one of the most powerful yet easy-to-use motion control systems available on the market. It is a feature rich software with capabilities such as multiple job reference positions, proximity restart, and much more!



## Gantry Supports **Fluid & Accurate**

The gantry supports on the 1000 Series WaterJet are cast aluminum and are machined on a four-axis horizontal machining center to guarantee perpendicularity.



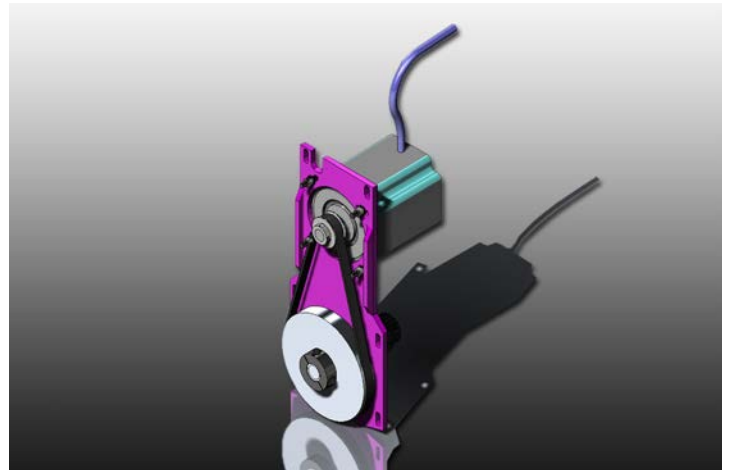
## Digital Stepper Drive System **Smooth & Reliable**

For the 1000 Series WaterJet, MultiCam selected the extensively tested two-phase, digital, brush-less, synchronous electric motors. Like all of our systems, MultiCam's selection of motors and drives provides optimized cutting. The results speak for themselves in the quality of the cuts.



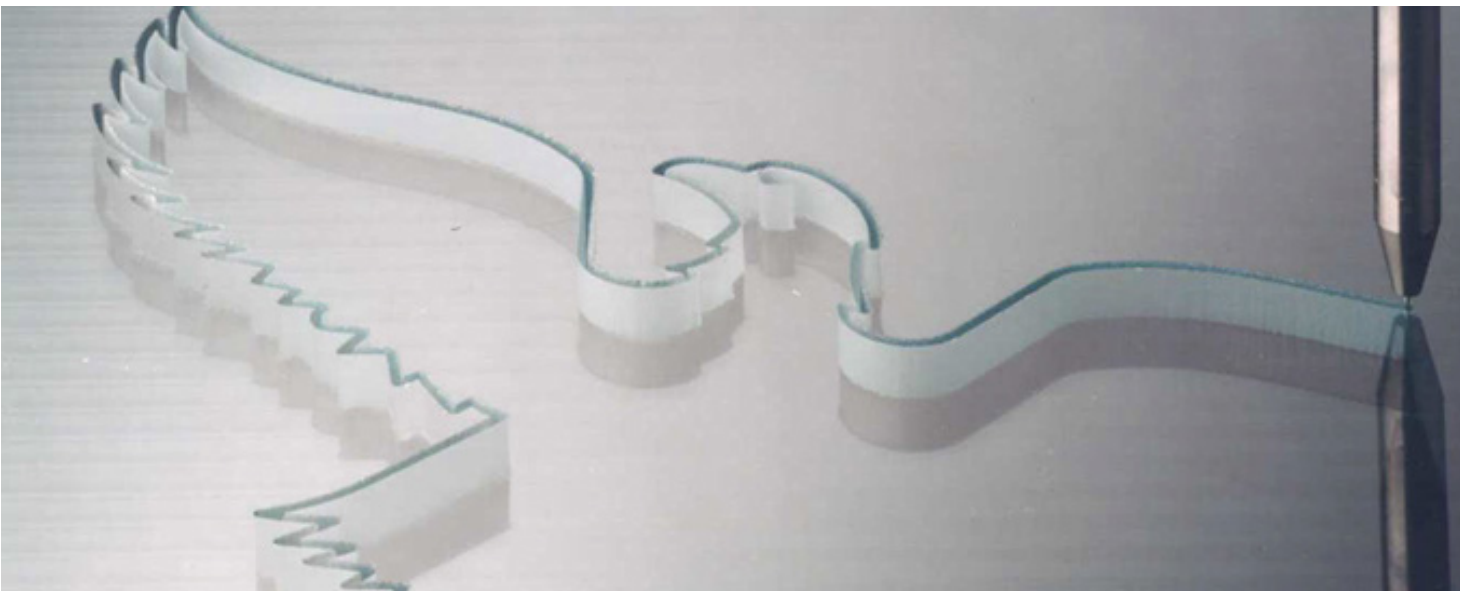
### Precision Lead Screw **Precise & Robust**

The 1000 Series WaterJet utilizes a 1/2" diameter stainless steel lead screw for strength, rigidity, and longevity.



### Drive Assembly **High Acceleration, Excellent Cut Quality**

Both the X-axis and Y-axis transmissions are based on aluminum urethane belt drives and aluminum castings to eliminate vibration and provide precise, responsive movement along with smooth acceleration. The output pinions are supported by a dual bearing arbor with wide bearing separation for optimum stiffness.



# PUMP OPTIONS

MultiCam partners with KMT, the best WaterJet pump company in the business, offering everything from direct drive to high pressure intensifiers. Whatever your application, MultiCam will have the best option for you to maximize both productivity and efficiency.



## KMT Waterjet Cutting Pumps

### TRILINE™ Direct Drive 55,000psi/30hp

### EFFICIENT & ECONOMICAL 55,000psi CUTTING

With the New TRILINE™ Direct Drive high pressure pump, KMT Waterjet Systems has expanded our product line by adding an alternative pump technology to the KMT portfolio. The TRILINE™ pump has an excellent cost of ownership value and can be used as a stand-alone unit for everyday cutting.

#### Efficiency for Everyday Cutting

The TRILINE™ high pressure pump with Direct Drive technology, is best used as a continuous duty water pressure generator.

The TRILINE™ has a small footprint and it's high efficiency at continuous operation is ideal for small job shops performing conventional shapecutting.

#### TRILINE™ Direct Drive Pump Features

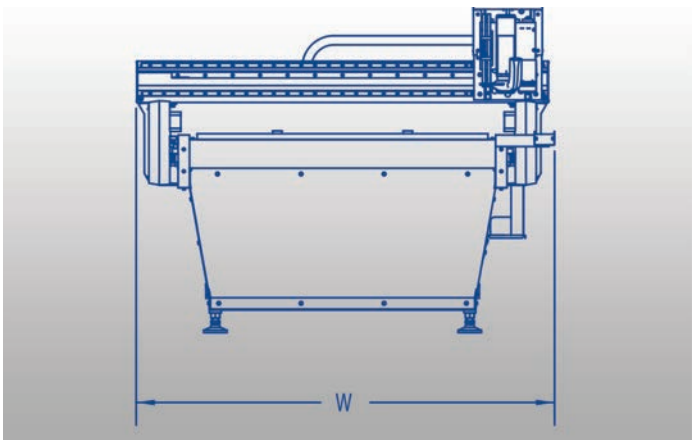
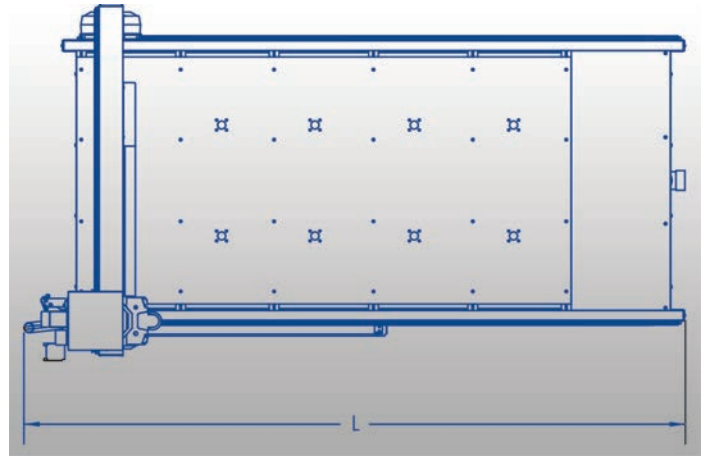
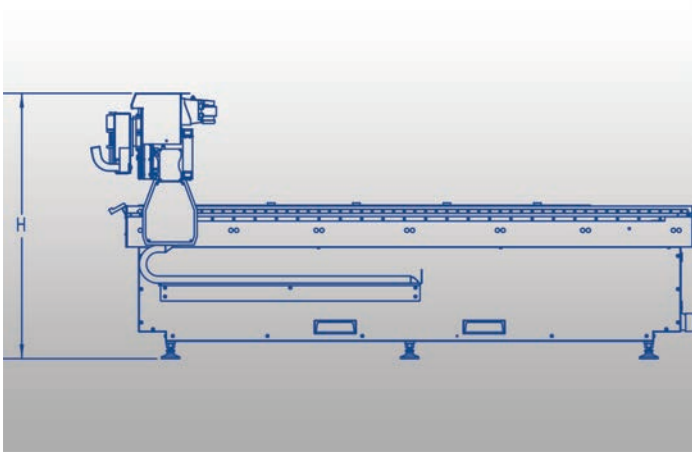
- Patented valve automatically controls Pressure & Flow Rate
- Electrical control panel with relay-based control system
- Economical softstarter reduces demand of motor startup current
- Emits 82dBA Sound Level: *Lower than both OSHA (90dB) & NIOSH (85dBA) Daily Permissible Noise Level Exposure*
- IE3 compliant motor
- No separate cooling water required
- Adjustable high and low pressure
- Power transmission operates motor to topworks with easy to maintain belt and pulley drive system

#### Technical Data

Nominal Pump Speed	30 hp/22 kw (710 rpm)
Pressure Range	55,000psi/3,792 bar
Water Volume	0.83 gpm/3.10 lpm
Dimension LxWxH (in/mm)	41 x 43 x 50/1,041 x 1,092 x 1,270
Weight	1,125 lb./510 kg
Max. Orifice Size at Max. Pressure	0.012" in./0.30 mm

# SPECIFICATIONS

MultiCam offers a wide variety of waterjet series. Call us if you have a unique application or questions on what will best fit your needs.



Specifications	Inches	Metric
Z-Axis Clearance	4.5"	114.3mm
Z-Axis Travel	6"	152.4mm
Repeatability	+/-0.001"	+/-0.0254mm
Cut Speed	1000 IPM	25.4 MPM
Rapid Traverse	1200 IPM	30.48 MPM
Drive System (X,Y)	Rack & Pinion	Rack & Pinion
Drive System (Z)	Lead Screw	Lead Screw
Standard Work Surface	Grating and/or blocks	Grating and/or blocks

Model	L (in/mm)	W (in/mm)	H (in/mm)	Working Area (in/mm)	Weight (lbs.)
1-204	177/4495	81/2057	54/1371	60x120 / 1524x3048	3157/1431
1-205	199/5054	81/2057	54/1371	60x144 / 1524x3657	3474/1575
1-304	177/4495	101/2565	54/1371	80x144 / 2133x3048	3828/1736
1-305	199/5054	101/2565	54/1371	80x144 / 2133x3657	4193/1901

\*\*Other models available



**MULTICAM**  
Complete CNC Solutions

1025 West Royal Lane  
DFW Airport, TX 75261



By phone:  
+1 972.929.4070  
Hotline:  
855.894.3136



By email:  
[sales@multicam.com](mailto:sales@multicam.com)



Or online at:  
[www.multicam.com](http://www.multicam.com)